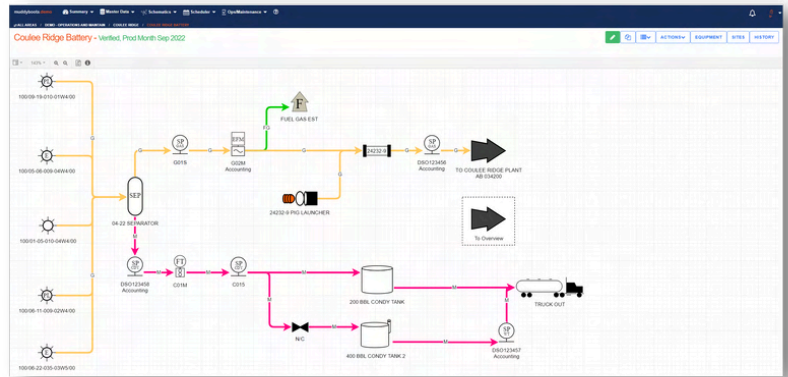


## Manage EPAP Compliance with Muddy Boots

## D-017 Compliant Schematics

- We'll create your schematics so fast your head will spin!
- Our bulk import and cloning functionality saves you time & money.
- Simplified editing process, version history & audit trail.
- Edit, review & verify in-house. No time to edit in-house? We can help you.
- Schematics link to your equipment data, everything is connected and accessible.
- Access product analyses from your schematics.



## Meter Calibration Management

- Know how many meters you have and when they were last calibrated.
- Schedule meter calibrations, meter proving, and sample collection.

muddyboots.com
Summary Master Data Schematics Scheduler Ops/Maintenance

---

ALL AREAS / DEMO - OPERATIONS AND MAINTAIN / ALL AREAS SCHEDULED TASKS

[SUMMARY EXCEL EXPORT](#)
[DETAILED EXCEL EXPORT](#)

### All Areas Scheduled Tasks

Start Date: 2023-01-01 to 2023-12-31

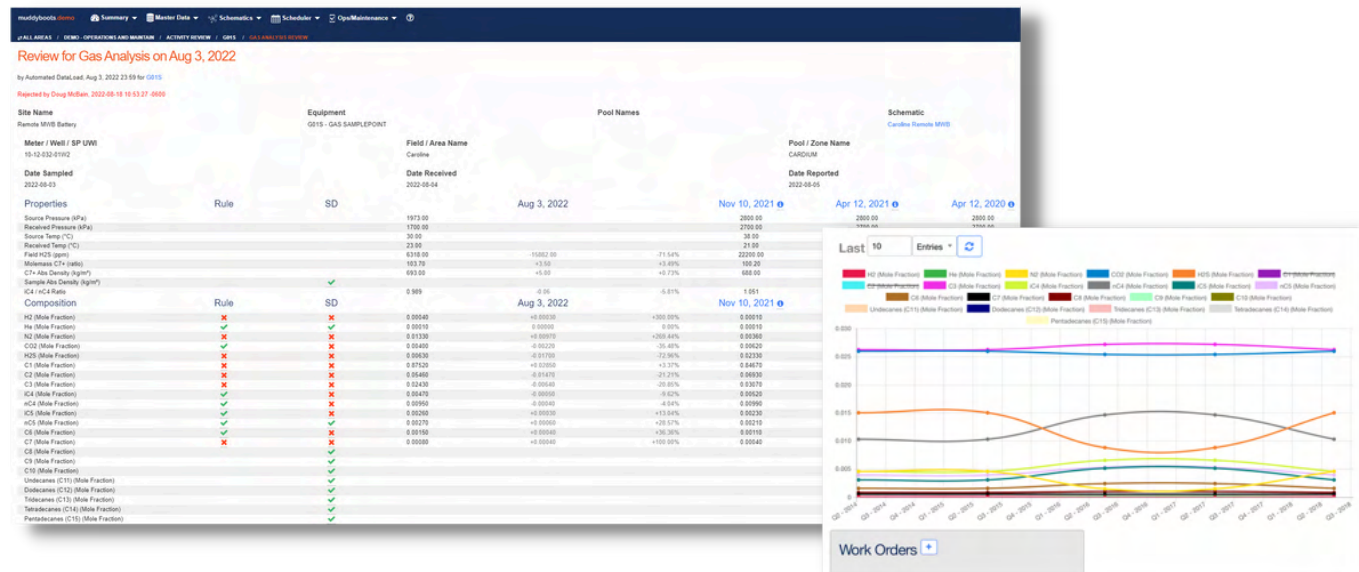
Search

FILTERS + CLEAR

	Start Date	Complete By	Task #	Work Order	Field Name	Site Name	Surface Location	Equipment Name	Short Note	Description	Activity Type	Activity Role	Assigned to	Priority	Status	Actions	Schedule Ends
<input type="checkbox"/>	2023-05-01	2023-05-31	T2670		Caroline	Caroline Gas Plant	10-25-015-10/VH4	G02M		EFM Orifice/V-Cone Meter Calibration Report	Measure - Meter Cals					<button>RECORD</button>	
<input type="checkbox"/>	2023-05-01	2023-05-31	T2670		Caroline	Remote MIB Battery	10-12-032-01W2	G01M		EFM Orifice/V-Cone Meter Calibration Report	Measure - Meter Cals					<button>RECORD</button>	
<input type="checkbox"/>	2023-05-01	2023-05-31	T2686		Caroline	Caroline Gas Plant	10-25-015-10/VH4	07-06 FLARE		EFM Orifice/V-Cone Meter Calibration Report	Measure - Meter Cals					<button>RECORD</button>	
<input type="checkbox"/>	2023-05-01	2023-05-31	T2694		Caroline	Pipeline Overview	Pipeline Overview	F001M	124578_1	EFM Orifice/V-Cone Meter Calibration Report	Measure - Meter Cals					<button>RECORD</button>	
<input type="checkbox"/>	2023-05-01	2023-05-31	T2702		Caroline	Pipeline Overview	Pipeline Overview	F001M	#123456_1	EFM Orifice/V-Cone Meter Calibration Report	Measure - Meter Cals					<button>RECORD</button>	
<input type="checkbox"/>	2023-05-01	2023-05-31	T2710		Caroline	Glenn Demo Site	100-gk (test demo)	Meter - Glenn		EFM Orifice/V-Cone Meter Calibration Report	Measure - Meter Cals					<button>RECORD</button>	

## Compositional Analysis

- Manage standardized analysis reports delivered directly to Muddy Boots from multiple laboratory vendors via one login.
- Load analysis directly from the lab & validate online.
- Generate Recombined Well Gas Analyses AER pas files, and confirm D-017 Density Exemption qualifications directly in our intuitive interface.
- View standard deviation and define acceptance rules.
- Automatically reschedule sampling for failed analyses.
- Link analysis to meters and wells.
- Push analysis to production accounting & SCADA systems.
- Trending is generated automatically.



## Manage EPAP Compliance with Muddy Boots

EPAP Theme	Manage Compliance with Muddy Boots
✓ Measurement Device Maintenance (Calibration, Inspection and Proving)	<ul style="list-style-type: none"> <li>• Manage your meter equipment, all equipment details, and current status.</li> <li>• Schedule all sampling, meter calibrations, proving, and witnessing, ensuring critical work is completed on time.</li> <li>• Review non-compliant calibration reporting results from connected vendors and reschedule where required.</li> </ul>
✓ Sampling and Analysis	<ul style="list-style-type: none"> <li>• Manage standardized analysis reports delivered directly to Muddy Boots from multiple laboratory vendors via one login.</li> <li>• Schedule sampling and analyses.</li> <li>• Load analyses directly from the lab &amp; validate online.</li> <li>• View standard deviation and define acceptance rules.</li> <li>• Optional allowance for auto-acceptance of criteria meeting compositional reporting.</li> <li>• Automatically reschedule sampling for failed analyses.</li> <li>• Link analyses to meters and wells.</li> <li>• Generate compositional exports for production accounting, SCADA, and other external systems.</li> <li>• Generate Recombined Well Gas Analyses AER pas files, and confirm D-017 Density Exemption qualifications directly in our intuitive interface.</li> </ul>
✓ Field Records	<ul style="list-style-type: none"> <li>• Any work that is completed in the field can be captured in Muddy Boots online or offline on any device with a web browser (PMs, non-routine, work orders, etc.)</li> <li>• Track, manage, and trace all work as linked to the source asset, schedule, or work order.</li> </ul>
✓ Trucked Volumes	<ul style="list-style-type: none"> <li>• Record trucked volumes in Muddy Boots. Data is visible, accessible, and easily exported.</li> </ul>
✓ Fuel/Flare/Vent	<ul style="list-style-type: none"> <li>• Record fuel/flare/vented gas events in Muddy Boots.</li> <li>• Integration with major emissions applications.</li> </ul>
✓ Schematics	<ul style="list-style-type: none"> <li>• Create, edit and maintain D-017-compliant schematics in-house.</li> <li>• An audit trail is maintained for the history of the diagram: <ul style="list-style-type: none"> <li>◦ View all historically validated versions of the schematics, and view the complete audit trail of changes.</li> </ul> </li> <li>• Automatic expiration of unchanged diagrams requiring annual validations as per D-017.</li> </ul>
✓ Facility Master Data Set Up	<ul style="list-style-type: none"> <li>• Apply and maintain accurate facility data within Muddy Boots on all appropriate assets easily via bulk importing/updating within the software.</li> </ul>

# Manage EPAP Compliance with Muddy Boots

How we do it Better, Faster, and for Less:

- **Better Functionality**

- Clean and easy-to-use interface
- Simple tools for complex processes: scheduling, analysis validation, etc.
- Robust asset details on your schematic diagrams
- Sample points, associated metering, and wellheads are mapped and linked to your analysis and calibrations
- Client-controlled automated compositional acceptance rules
- Staff, contractors, and service providers can securely record data directly into the software, online or offline.
- Data is visible and exportable throughout the software. Muddy Boots provides multiple ways to view analyses and calibrations, allowing all key personnel to have access to the information they need quickly.

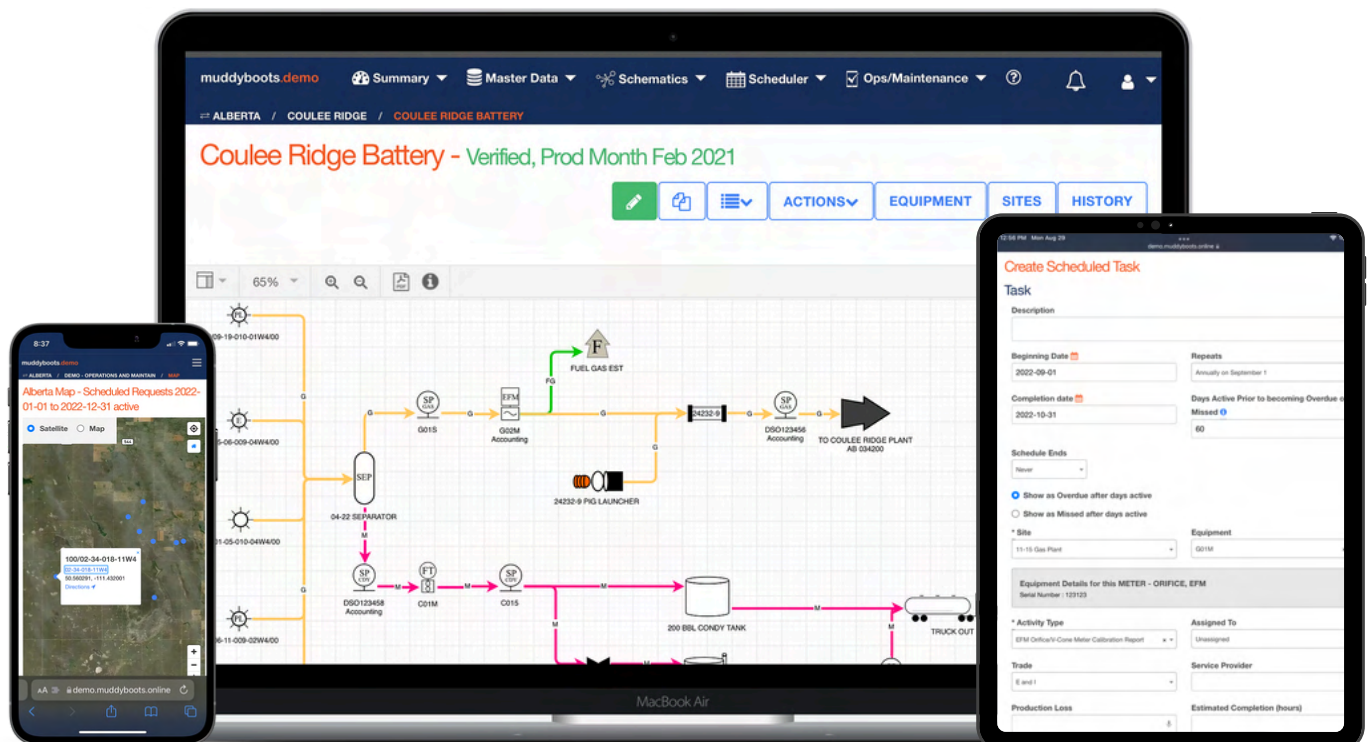
- **Faster Implementation**

- Automated import tools make implementation quicker and more efficient (bulk loading schedules, schematics, well lists, equipment data, historical analyses, etc.)
- The creation of schematic diagrams automatically creates the equipment master list
- Out-of-the-box calibration forms (custom form creation also available)

- **Lower Cost**

- Ask us for a quote, we're likely to save you 50% on your current costs

**Schedule a demo today for a look at Muddy Boots Measure**



**Contact us**  
[info@muddyboots.online](mailto:info@muddyboots.online)  
[www.muddyboots.online](http://www.muddyboots.online)